

Troubleshooting

Flowchart — Both Fans High Speed

NOTE: The both fans should run at high speed when;

- there is excessive high – side pressure in the A/C system.
- engine coolant temperature exceeds 194°F (90°C).

Both fans do not run at high speed.

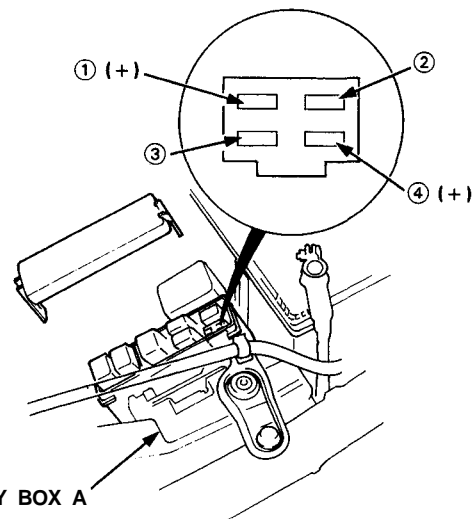
Check No. 47 (20A) fuse in the under-hood fuse/relay box.

Is the fuse OK?

NO

Replace the fuse.

YES



UNDER-HOOD RELAY BOX A

Remove the radiator fan relay from the under-hood relay box A.

Measure voltage between the No. ① terminal (+) and body ground (-).

Is there battery voltage?

NO

Repair open in the WHT wire between the No. 47 (20A) fuse in the under-hood fuse/relay box and the radiator fan relay in the under-hood relay box A.

YES

To page 21-47



From page 21-46

Turn the ignition switch ON.

Measure voltage between the No. ④ terminal (+) and body ground (-).

Is there battery voltage?

NO

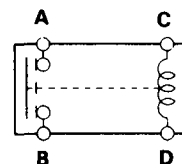
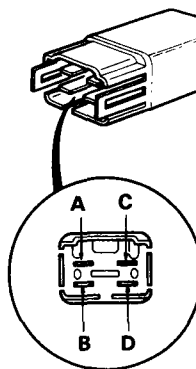
Repair open in the YEL/BLK wire between the No. 3 (15A) fuse in the under-dash fuse/relay box and the radiator fan relay in the under-hood relay box A.

YES

Turn the ignition switch OFF.

Test the radiator fan relay (see page 21-66).

RADIATOR FAN RELAY



Is the relay OK?

NO

Replace the radiator fan relay.

YES

To page 21-48

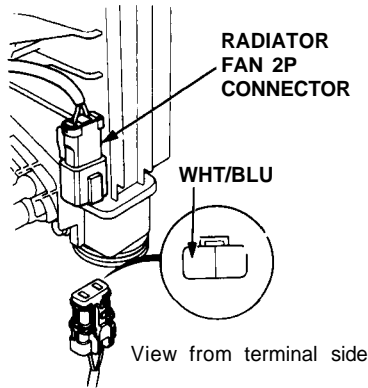
(cont'd)

Troubleshooting

Flowchart — Both Fans High Speed (cont'd)

From page 21-47

Disconnect the 2P connector from the radiator fan.



Check for continuity in the WHT/BLU wire between the No. ③ terminal of the radiator fan relay connector and the radiator fan.

Is there continuity?

NO

YES

Remove the radiator fan main relay from the under-hood relay box A.

Turn the ignition switch ON.

Measure voltage between the NO. ⑤ terminal (+) and body ground (-).

Is there battery voltage?

NO

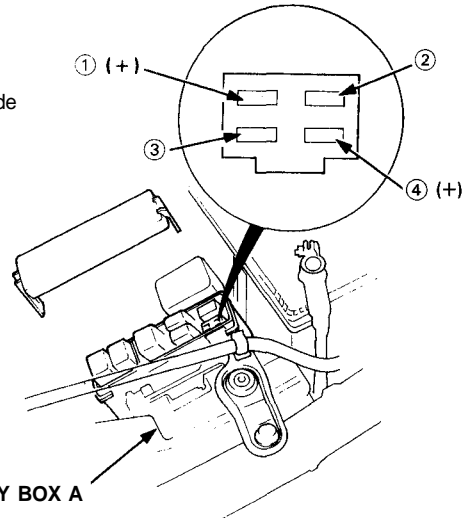
YES

Turn the ignition switch OFF.

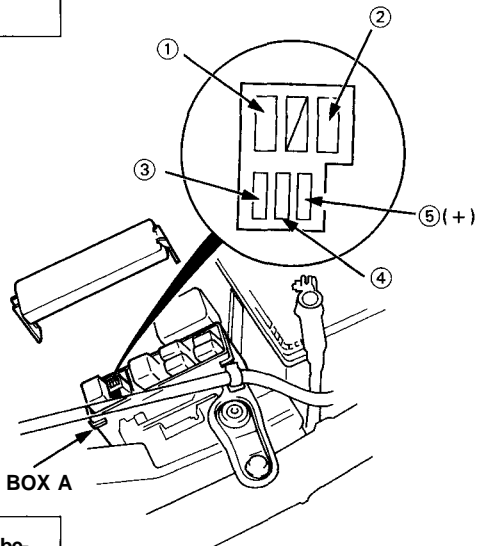
To page 21-49

Repair open in the WHT/BLU wire between the radiator fan relay in the under-hood relay box A and the radiator fan.

UNDER-HOOD RELAY BOX A



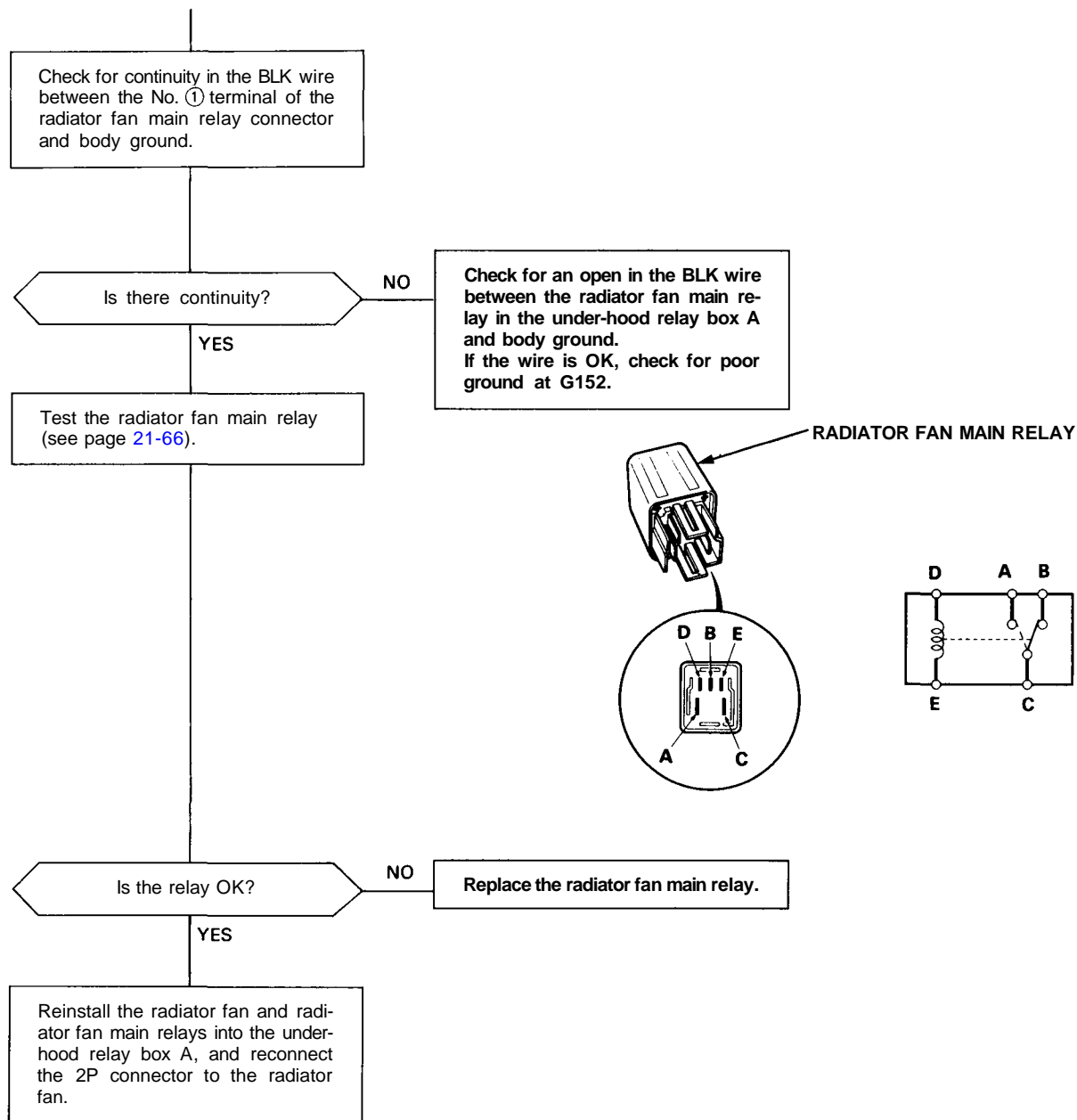
UNDER-HOOD RELAY BOX A



Repair open in the YEL/BLK wire between the No. 3 (15A) fuse in the under-dash fuse/relay box and the radiator fan main relay in the under-hood relay box A.



From page 21-48



To page 21-50

(cont'd)

Troubleshooting

Flowchart — Both Fans High Speed (cont'd)

